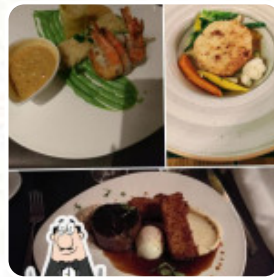


Elch Club Menu

<https://menulist.menu>
2 Grevelsbarriere, Bertrange, Luxembourg
+352274444 - <http://elch.lu>



A complete [menu](#) of Elch Club from Bertrange covering all **18** menus and drinks can be found here on the card.
For **changing offers**, please get in touch via phone or use the contact details provided on the website.

Elch Club Menu



Sashimi

TUNA TARTAR

Main Courses

LASAGNE

Rice

RISOTTO

Appetizer

TARTARE

Antipasti - Starters

CARPACCIO

Hot Drinks

COFFEE

French

FOIE GRAS

Dessert

CHOCOLATE LAVA CAKE

MOËLLEUX AU CHOCOLAT

These Types Of Dishes Are Being Served

MEAT

FISH

SOUP

AMUSE BOUCHES

Ingredients Used

TUNA

BEEF

SHRIMP

SEAFOOD

HALIBUT

Elch Club Menu



Elch Club

2 Grevelsbarriere, Bertrange,
Luxembourg

Opening Hours:

Monday 11:00-01:00
Tuesday 11:00-01:00
Wednesday 11:00-01:00
Thursday 11:00-01:00
Friday 11:00-01:00
Saturday 11:00-01:00

Made with menulist.menu

 gallery image

