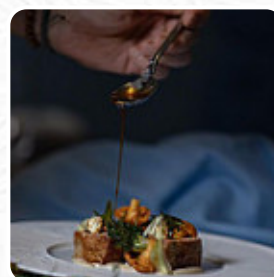
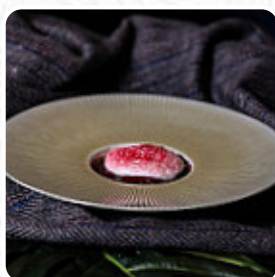




Fernandõ Gastrotheque Speisekarte

<https://speisekarte.menu/>
6 Tigne Street, SLM 3172 Sliema, Malta
+35679222023 - <https://www.fernando.com.mt/>



Fernandõ Gastrotheque Speisekarte



Seafood

CALAMARI

Drinks

BEER

Rice

RISOTTO

Appetizer

TARTARE

Dessert

TARTUFO

Hot drinks

COFFEE

Ingredients

CHOCOLATE

BEEF

PORK MEAT

SEAFOOD

CHEESE

Mains



FISH

SOUP

PASTA

MEAT

PIZZA

TUNA STEAK

Fernandõ Gastrotheque

6 Tigne Street, SLM 3172 Sliema,
Malta

Öffnungszeiten:

Dienstag 18:00-22:30

Mittwoch 18:00-22:30

Donnerstag 18:00-22:30

Freitag 18:00-22:30

Samstag 18:00-22:30

Gemacht mit speisekarte.menu

